

HemoCue® Products

The HemoCue systems consist of portable analyzers together with specially designed microcuvettes. The systems provide lab-quality results at the Point-of-Care. The systems are factory calibrated and needs no further calibration. The correct volume of sample is drawn into the microcuvette by capillary action, where it is spontaneously mixed with the reagents in the cuvette cavity. No mixing of reagents, dispensing or pipetting is required.



HemoCue 201 systems, Hb and Glucose

The HemoCue 201 systems for Hemoglobin and Glucose provide laboratory quality results in whole blood. The instrument, which can hold up to 600 results, can be connected to a PC or a printer. The analyzers have an internal electronic selftest that is performed every time the analyzer is turned on, and every second hour if left on. Quality control measurements can be marked with a QC symbol.



HemoCue 201 DM systems, Hb and Glucose

The HemoCue 201 DM systems for Hemoglobin and Glucose with Data Management functions allow health care providers to ensure the authorized and appropriate use of the analyzers. By means of a wide range of settings and definable options, the systems can be made to prompt the operator for identification, batch numbers, quality control and other required information before analysis. The information may be entered as free text or by use of the built-in bar code scanner. All stored information is easily reviewed or transferred automatically into a computerized information system.

Technical Specifications:

HemoCue Hb 201+ and HemoCue Hb 201 DM

Method: Azidemethemoglobin
Measurement range: 0–256 g/L (0–25.6 g/dL, 0–15.9 mmol/L)
Sample material: 10 µL of capillary, venous or arterial blood
Measurement time: Results displayed within 15–60 seconds

HemoCue Glucose 201+ and HemoCue Glucose 201 DM

Method: Glucose dehydrogenase
Measurement range: Whole blood: 0–22.2 mmol/L (0–400 mg/dL)
Plasma Equivalent: 0–24.6 mmol/L (0–444 mg/dL)
Sample Material: 5 µL of capillary, venous or arterial blood
Measurement time: Displayed within 40–240 seconds depending on the glucose concentration



HemoCue Plasma/Low Hb system

The HemoCue Plasma/Low Hb system is designed for measurement of low concentrations of hemoglobin in plasma, serum and irrigating fluids. Estimation of hemolysis is a quality control parameter in many different applications e.g. blood bank products, salvaged and filtered blood.

Method: Azidemethemoglobin

Measurement range: 0–30.0 g/L (0–3.0 g/dL, 0–3000 mg/dL, 0–1.90 mmol/L)

Sample material: 20 µL of plasma, serum or aqueous solutions

Measurement time: Results displayed within 15–60 seconds



HemoCue Hb 301

The Hb 301 system is a swift and effective tool for anemia screening. Based on HemoCue's original cuvette technology, the system is optimized for use in primary care and blood donation settings.

Method: Scattering measurement of whole blood at Hb/HbO₂ isobestic point

Measurement range: 0–25.6 g/dL (0–256 g/L, 0–15.9 mmol/L)

Sample material: 10 µL of capillary, venous or arterial blood

Measurement time: Results displayed ~10 seconds



HemoCue Albumin 201

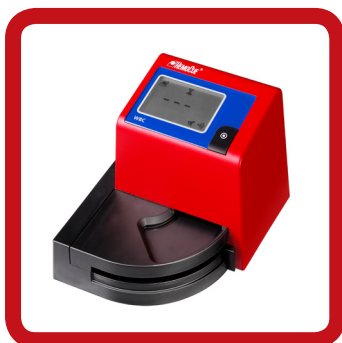
The HemoCue Albumin 201 system provides quantitative determination of albumin in urine. The system can be used for the purpose of screening, monitoring and supporting the clinical evidence in the diagnosis and treatment of microalbuminuria.

Method: Turbidimetric immunoassay

Measurement range: 5–150 mg/L

Sample material: 18 µL of spot or timed urine collections

Measurement time: Results displayed within 90 seconds



HemoCue WBC

The HemoCue WBC system is an entirely new and unique point-of-care testing system for the determination of the total white blood cell count. Based on HemoCue's proven and reliable cuvette technology and ease of use, lab quality results are obtained within minutes, making the system optimal for primary care settings.

Method: Picture analysis of methyleneblue stained leucocytes

Measurement range: 0.3–30.0x 10⁹/L (300–30000/mm³, 300–30000/µL)

Sample material: 10 µL of capillary or venous (EDTA) whole blood

Measurement time: Results displayed within 3 minutes

Why HemoCue

HemoCue's test systems are being used every day by health care professionals all over the world.

Key features:

- Can be used by non-laboratory personnel after a brief training session.
- Produce lab quality results within moments.
- The disposable microcuvettes automatically draw a precise volume of the specimen.
- No mixing of reagents, dispensing or pipetting is required.
- The analyzers are factory calibrated and require a minimum of maintenance.
- No calibration needed between cuvette batches.



HemoCue AB, Box 1204, SE-262 23 Ängelholm, Sweden. Phone +46 775 70 02 10. Fax +46 775 70 02 12.
info@hemocue.se www.hemocue.com